

A man in a brown t-shirt, safety glasses, and yellow gloves is working on a machine with large brushes. The background is a blurred industrial setting.

MEM Industry at a glance,  
by end of 2018

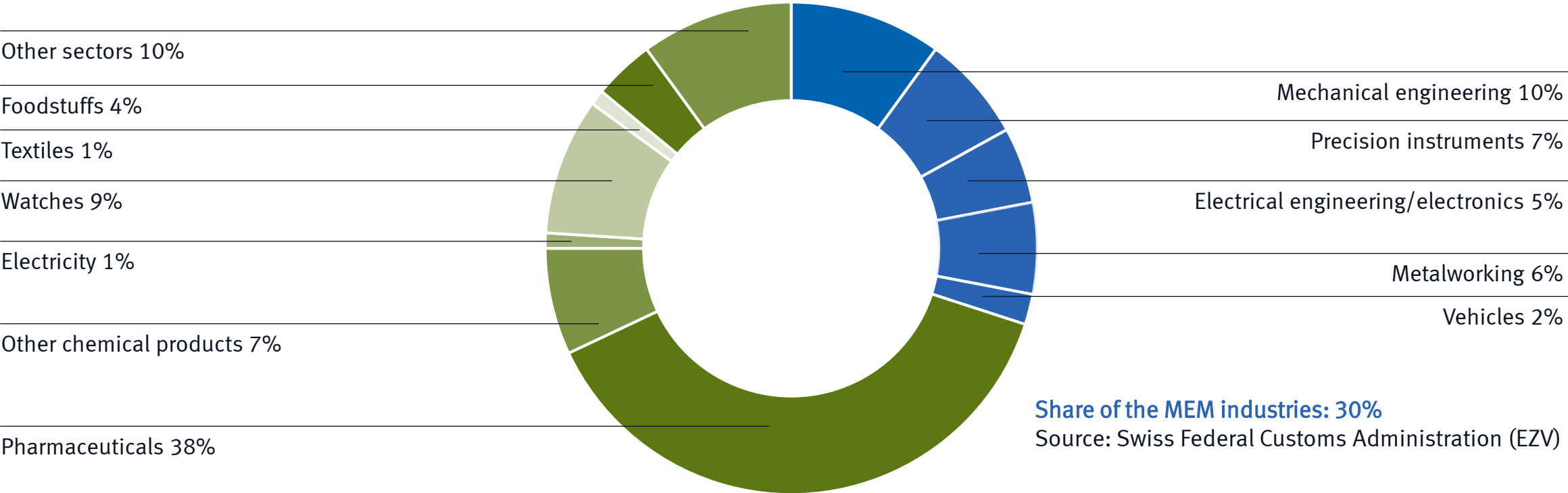
International Fluid Power Summit, Hannover, 3rd April 2019

# Key Figures of the MEM Industries 2018

- Total turnover: CHF 87 Billions
- Export: CHF 69,7 Billions  
(approx. 30% of all Swiss exports)
- Share of export: 79% (of which 60% goes to the Euro zone)
- Share of GDP: over 7%
- Workforce: around 320'000 in Switzerland  
(in addition approx. 540'000 abroad)
- Apprenticeships: around 20'000 in Switzerland

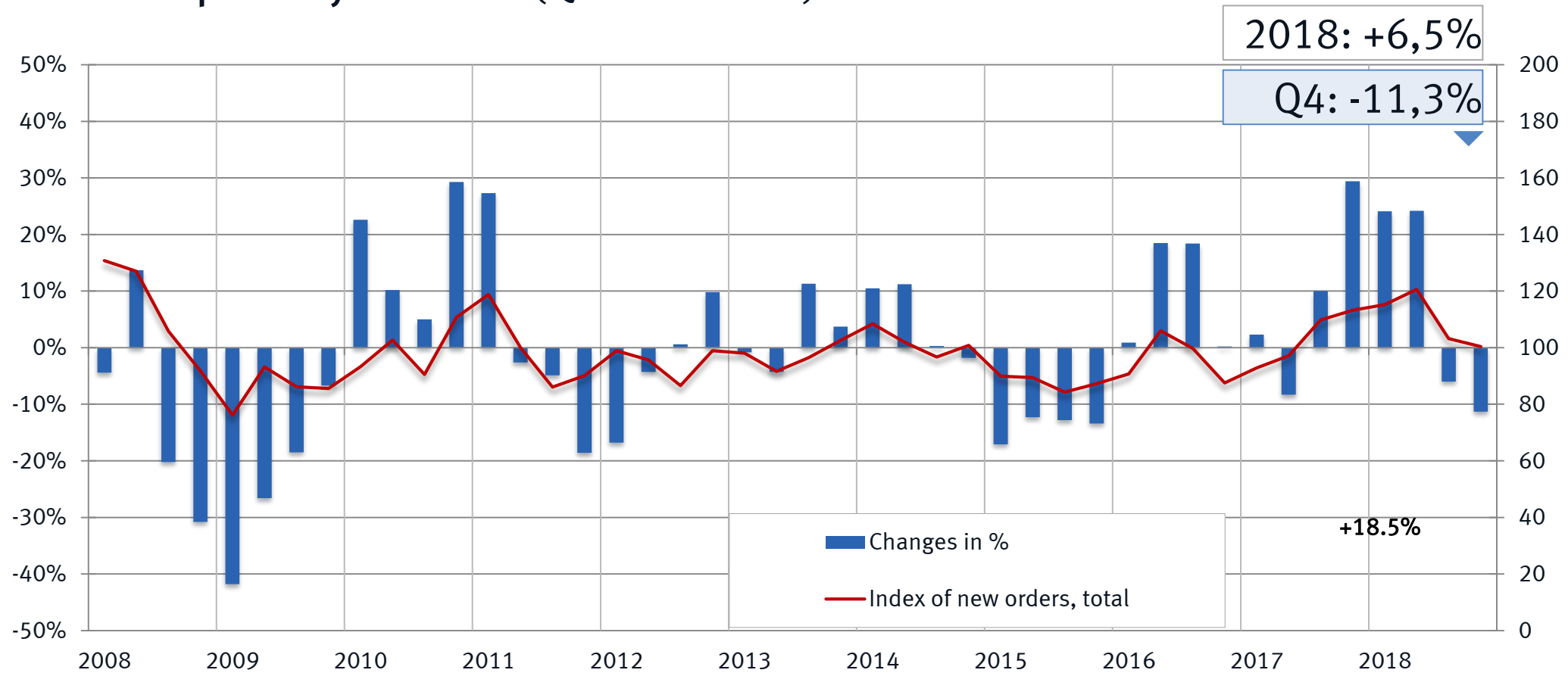
# Total Swiss goods exports 2018

## Sectors in %



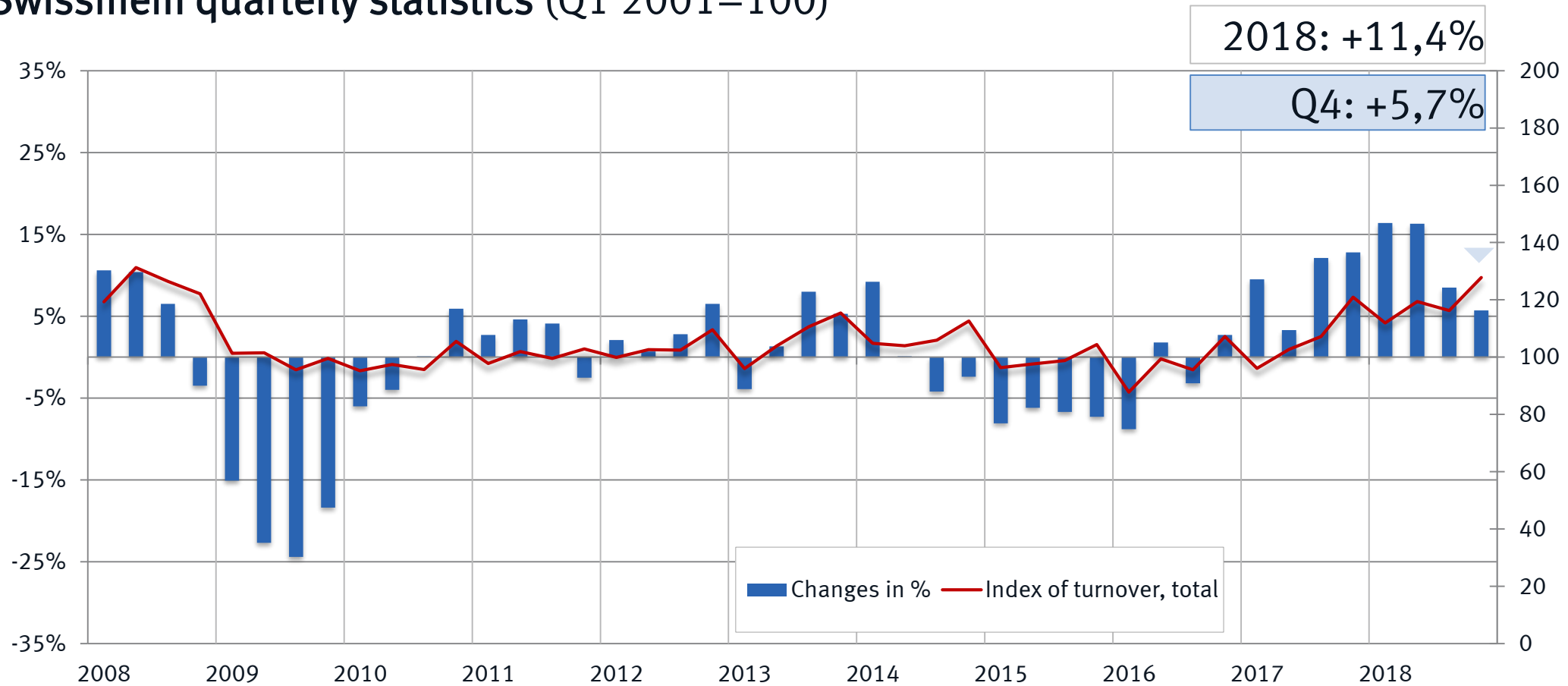
# New orders received by the MEM Industries

Swissmem quarterly statistics (Q1 2001=100)



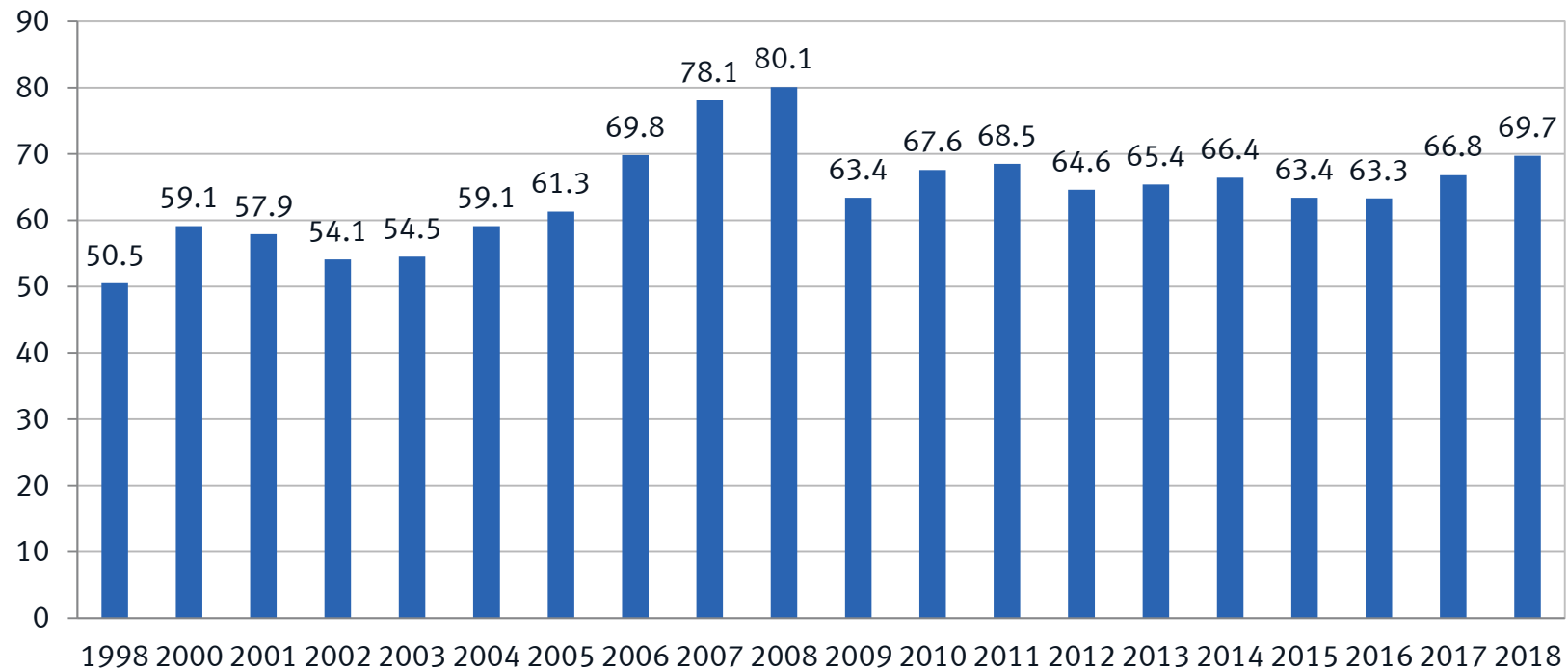
# Turnover of the MEM Industries

Swissmem quarterly statistics (Q1 2001=100)



# Exports of the MEM Industries

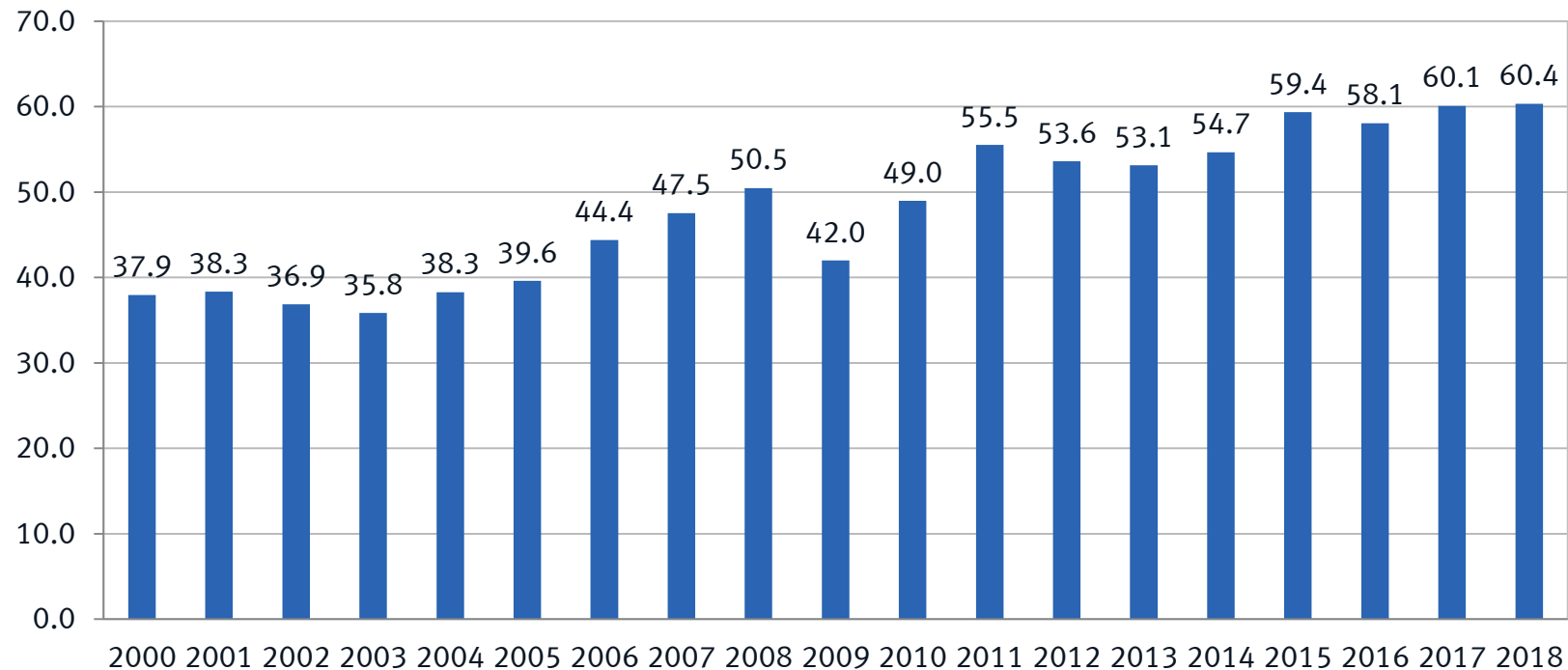
In Billions CHF



Source: EZV

# Exports MEM Industries

In Billions Euro



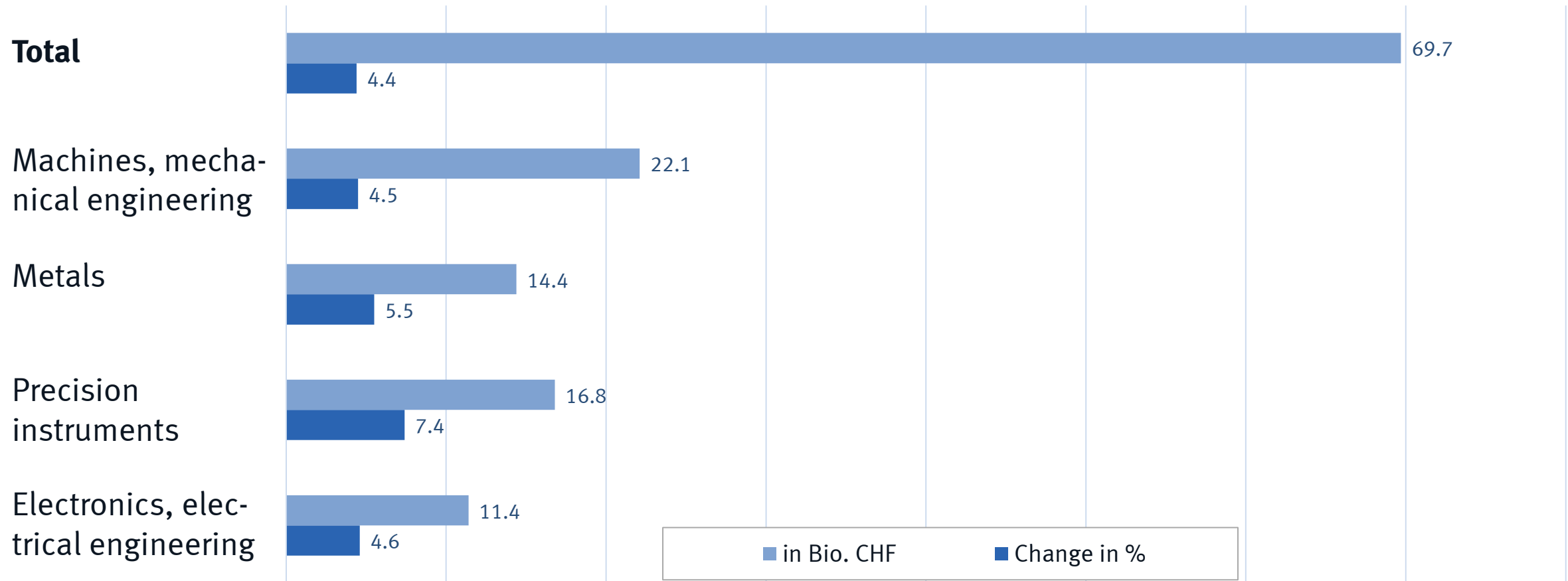
Quelle: EZV

2000	1,55779
2001	1,51034
2002	1,46704
2003	1,52096
2004	1,54365
2005	1,54809
2006	1,57293
2007	1,64266
2008	1,58666
2009	1,51007
2010	1,38053
2011	1,23355
2012	1,20531
2013	1,23079
2014	1,21463
2015	1,06811
2016	1,09009
2017	1,11157
2018	1,15487

Average exchange rate (SNB)

# Exports of MEM Industries Jan to Dec 2018

By product groups: change compared with previous year

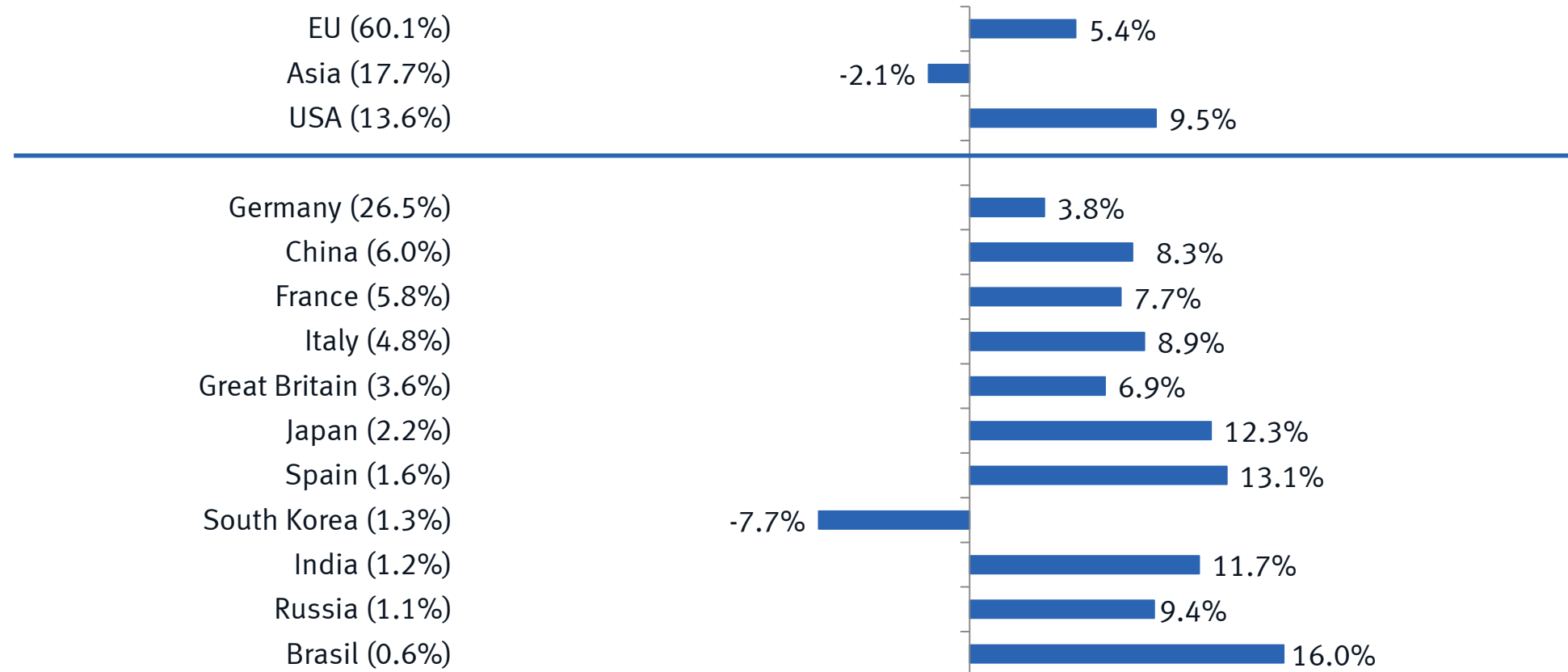




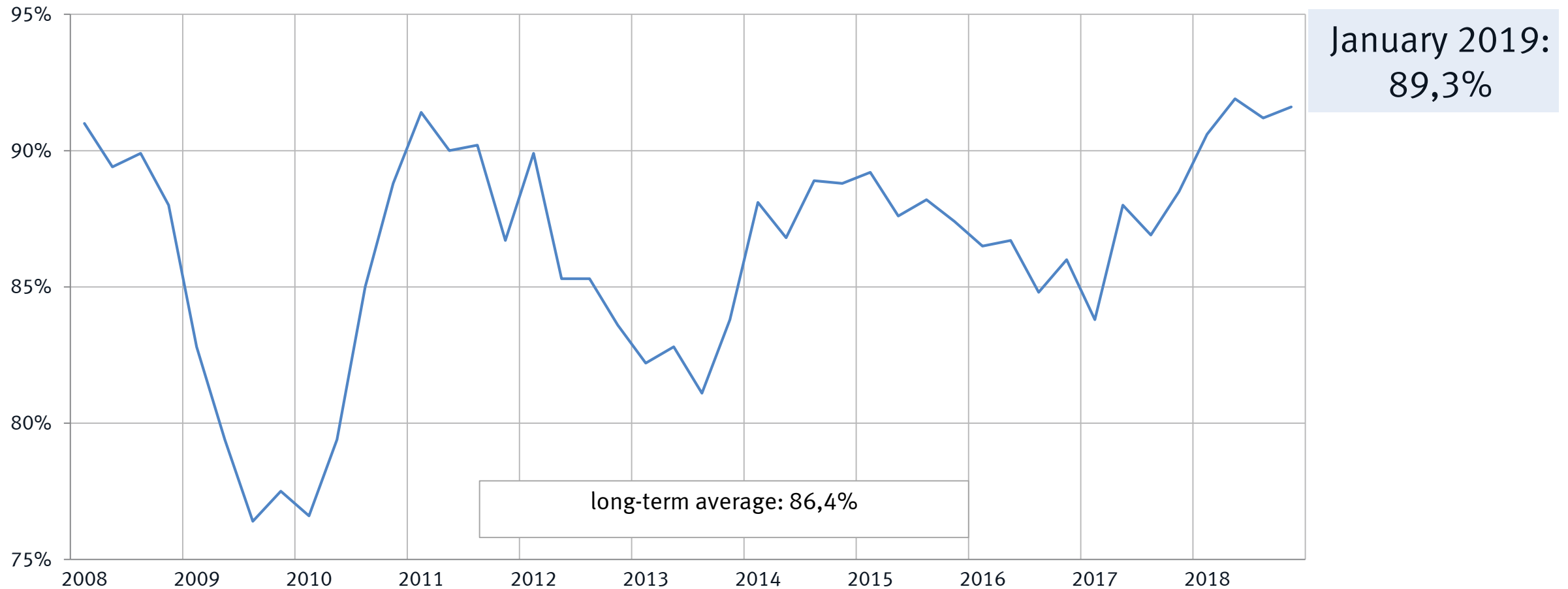
# Exports MEM Industries Jan to Dec 2018

## Share of total MEM Exports

## Change in % vs. previous year



# Production capacities in the MEM Industries



# Workforce in the MEM Industries

(Full-time and part-time, as of Nov. 2019)

Year	Employees	$\Delta$ in % to previous year
2004	309'800	– 1,4
2008	350'400	3,8
2009	336'800	– 3,9
2010	329'100	– 2,3
2015	325'700	– 1,3
2016	317'500	– 2,5
2017	312'300	– 1,6
2018	318'300	1,9

	2017	2018	$\Delta$ in % to previous year period
Q1	312'200	314'600	0,8
Q2	312'200	317'500	1,7
Q3	312'300	320'400	2,6
Q4	312'600	320'500	2,5

Soure: BESTA employment statistics (Federal Statistical Office);  
own calculations based on STATENT statistics (corporate structure)

Annual values: average of all four quarters – rounded to the nearest 100.

The basis for the employment statistics was modified in Q1 2018 in line with the STATENT statistics for corporate structures. The time series for the period 2015-2018 was adjusted accordingly in Q2 2018.